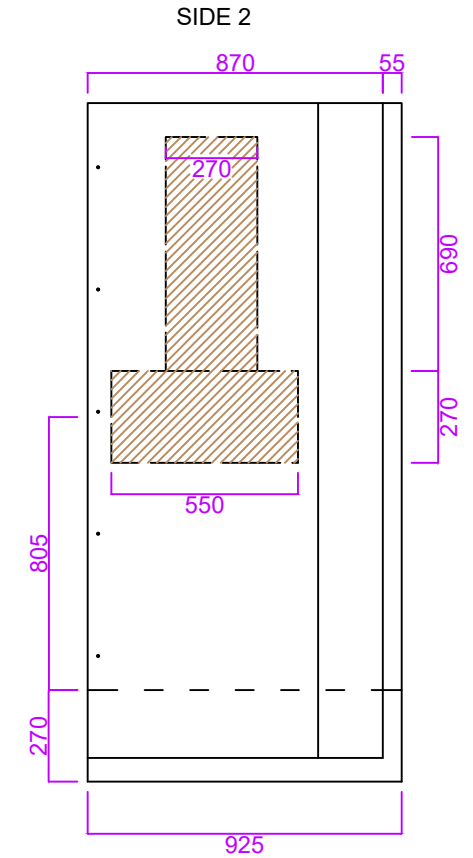
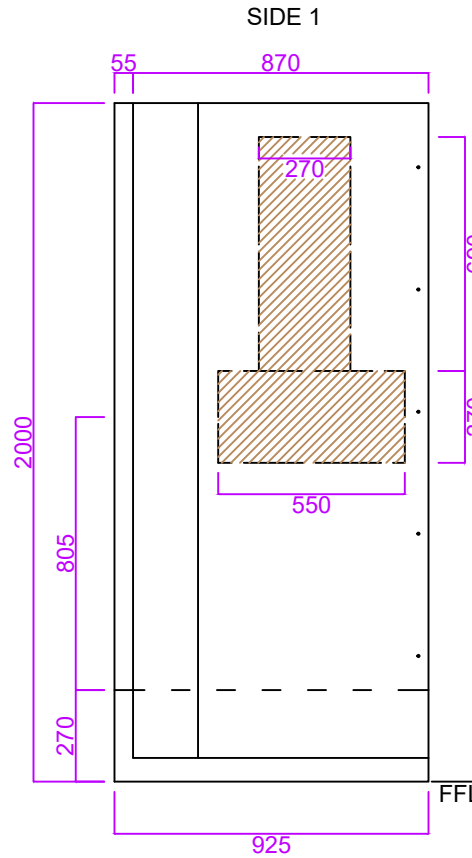
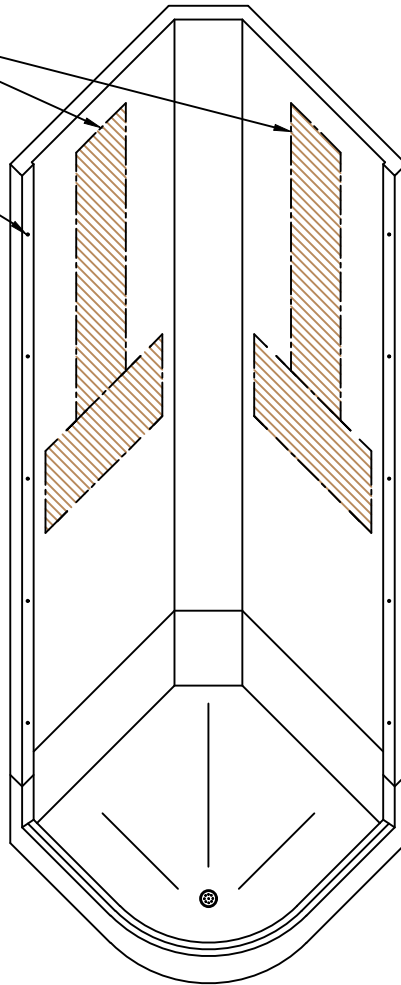
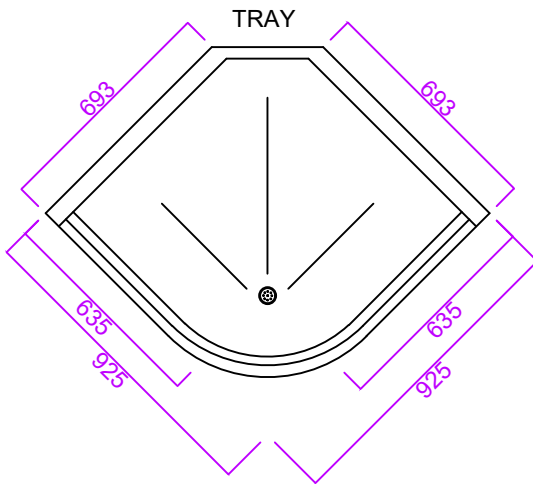
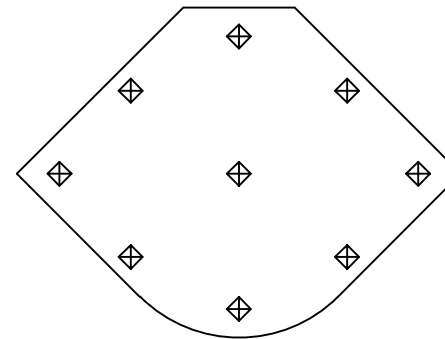


# Eclipse 900 Quadrant Double Door

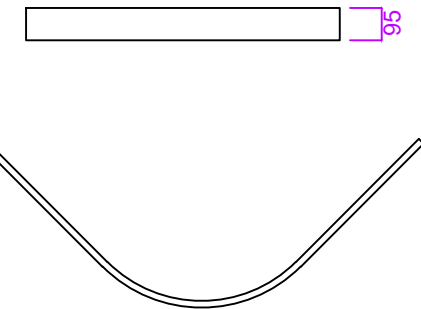
- Reinforced to accept mixer and riser rail.
- Pre-drilled for fixing.
- White gel coat finish.
- Supplied with adjustable leg kit (90-130mm).
- Supplied with 16No. M5x25mm fixing bolts and nuts.
- 50mm waste and trap as standard.



LEG POSITIONING



PLINTH DETAIL



Product Name: Eclipse Quadrant 900
Product Code: E9Q
Configuration: Two piece / Sectional
Material / Colour: GRP / White
Door Type / Finish: Double Door / Chrome